

# 1620 INNES AVE

SAN FRANCISCO, CA 94124

**FOR LEASE - INDIA BASIN**  
**±37,500 SF PAVED, FENCED, LIT YARD**  
**WITH A ±3,500 BUILDING/OFFICE**

**Matt Squires**  
Executive Managing Director  
+1 650 401 2136  
matt.squires@cushmanwakefield.com  
LIC #01248804

1350 Bayshore Hwy., Suite 900  
Burlingame, CA  
main +1 650 347 3700  
fax +1 650 347 4307  
cushmanwakefield.com

**Kaileigh Flanagan**  
Fortress Investment Group  
11611 San Vicente Blvd, 10th Floor  
Los Angeles, CA 90049  
M: 760-610-4659  
kflanagan@fortress.com

View Site Specific  
**COVID-19**  
PREVENTION PLAN



# 1620 INNES AVE

SAN FRANCISCO, CA 94124

**FOR LEASE - INDIA BASIN**  
**±37,500 SF PAVED, FENCED, LIT YARD**  
**WITH A ±3,500 BUILDING/OFFICE**

## PROPERTY HIGHLIGHTS

### **UNDER NEW OWNERSHIP**

- **±37,500 SF Lot**
- **±3,500 SF Building/showroom office w/ full kitchen, showers etc.**
- **3 curb cuts with gates**
- **12' wall**
- **Maintenance garage**
- **Vehicle wash area with drains**
- **Fenced, lit and paved yard**
- **India Basin area**
- **Located across from 3rd St Rail line**
- **PDR-1-G (Light industrial) Zoning**
- **1 Mile to HWY 280 | 1.5 Miles to HWY 101**  
**2 Miles to Chase Center**  
**3.1 Miles to 4th St Caltrain Station**  
**10.8 Miles to SFO**

#### **Matt Squires**

Executive Managing Director  
+1 650 401 2136  
matt.squires@cushmanwakefield.com  
LIC #01248804

1350 Bayshore Hwy., Suite 900  
Burlingame, CA  
main +1 650 347 3700  
fax +1 650 347 4307  
cushmanwakefield.com

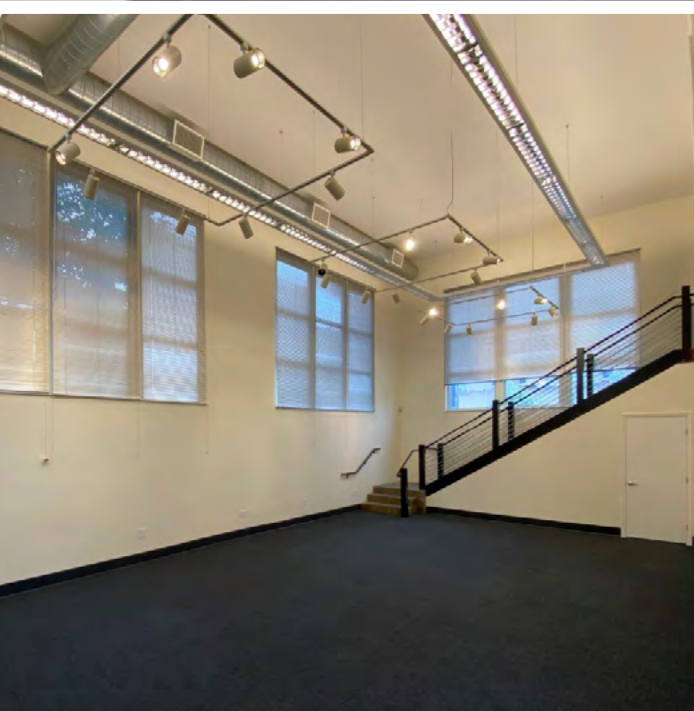
#### **Kaileigh Flanagan**

Fortress Investment Group  
11611 San Vicente Blvd, 10th Floor  
Los Angeles, CA 90049  
M: 760-610-4659  
kflanagan@fortress.com



# 1620 INNES AVE

SAN FRANCISCO, CA 94124





# 1620 INNES AVE


SAN FRANCISCO, CA 94124


**FOR LEASE - INDIA BASIN**  
**±37,500 SF PAVED, FENCED, LIT YARD**  
**WITH A ±3,500 BUILDING/OFFICE**





 - CALTRAIN ROUTE

 - CALTRAIN STATION

 - BART ROUTE

 - BART STATION





### Matt Squires

Executive Managing Director  
+1 650 401 2136  
matt.squires@cushwake.com  
LIC #01248804

1350 Bayshore Hwy., Suite 900  
Burlingame, CA  
main +1 650 347 3700  
fax +1 650 347 4307  
cushmanwakefield.com

### Kaileigh Flanagan

Fortress Investment Group  
11611 San Vicente Blvd, 10th Floor  
Los Angeles, CA 90049  
M: 760-610-4659  
kflanagan@fortress.com

